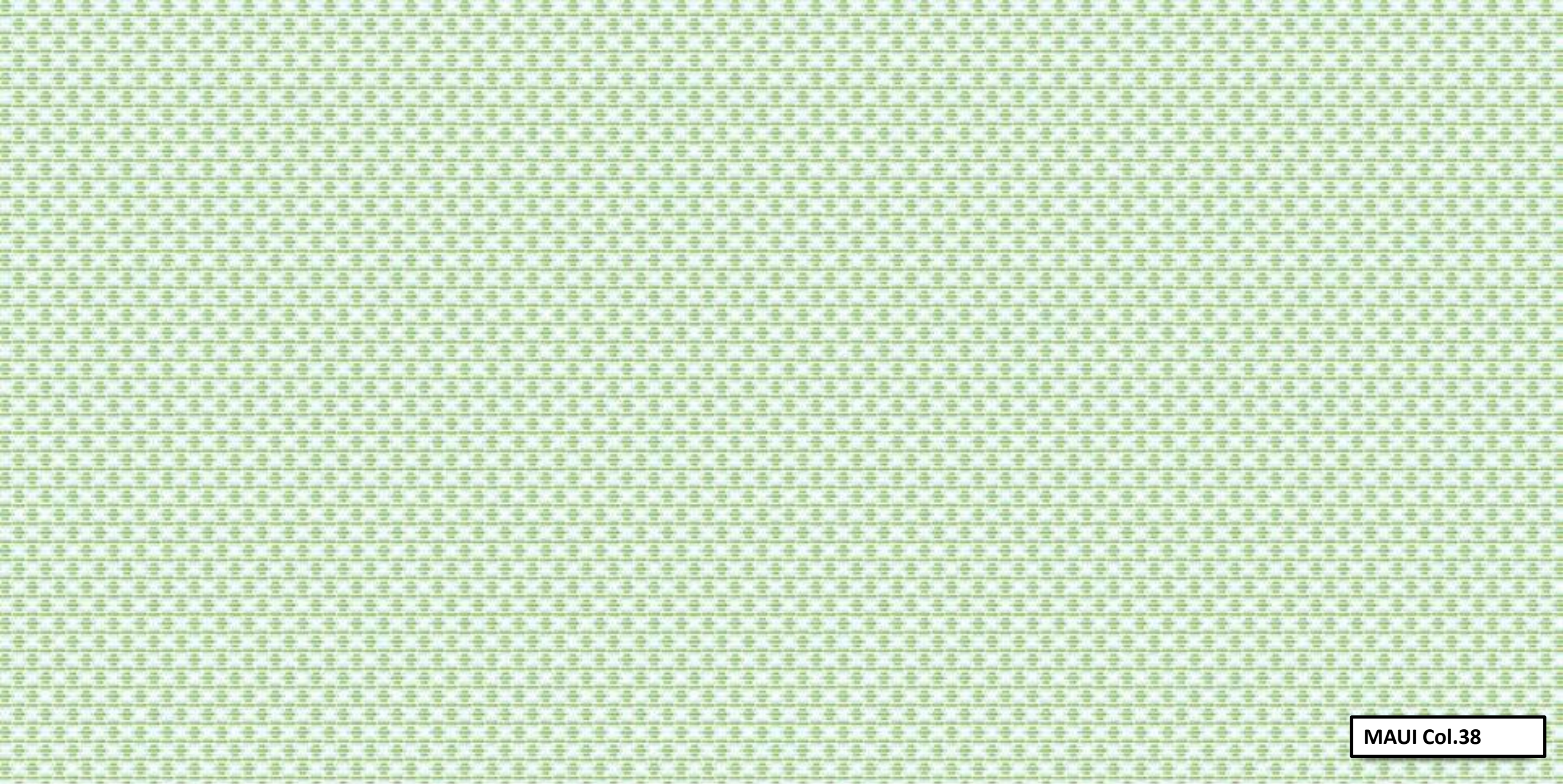


HAWAII







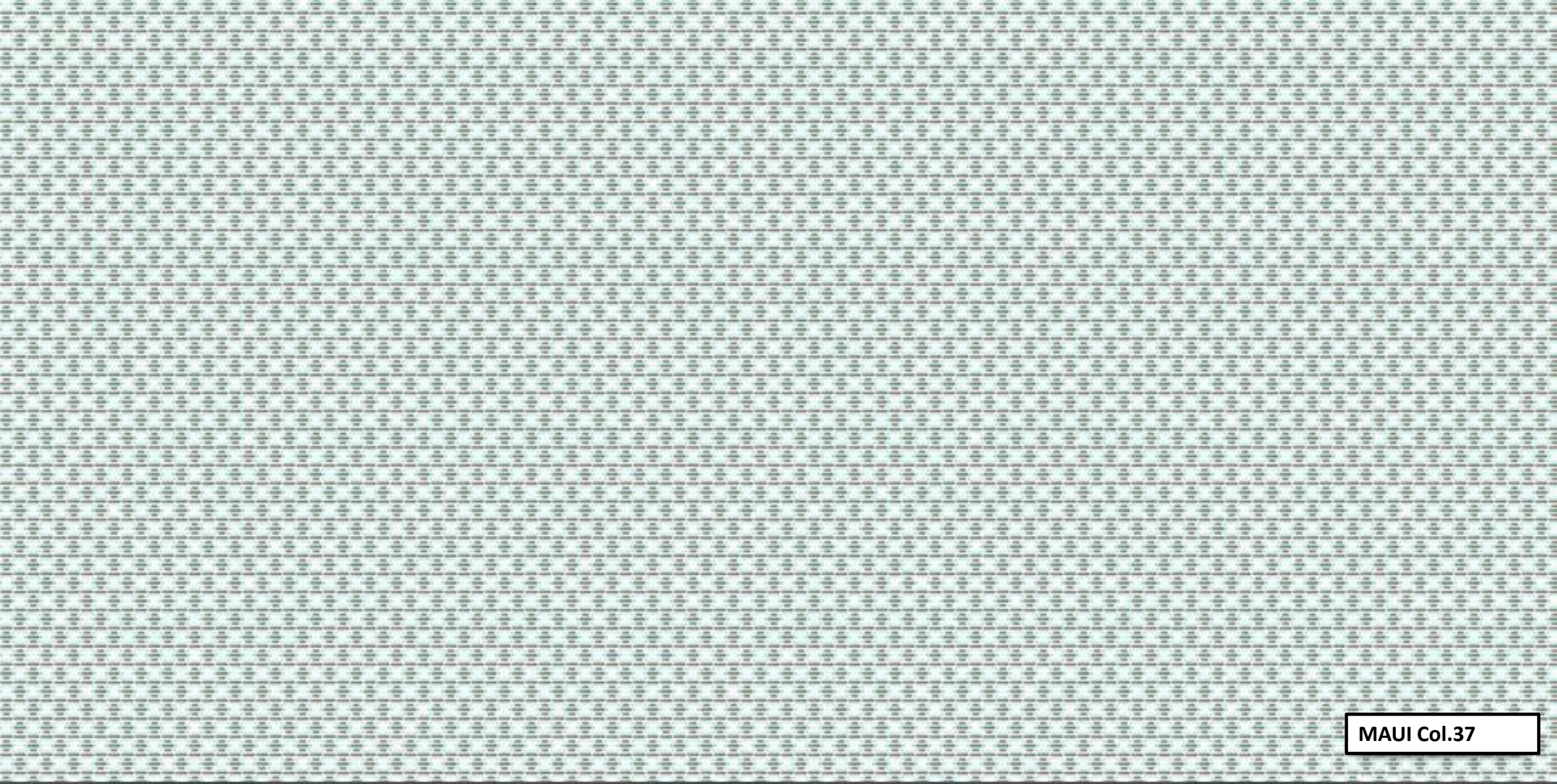
MAUI Col.38



LANAI Col.38



WAIKIKI Col.38



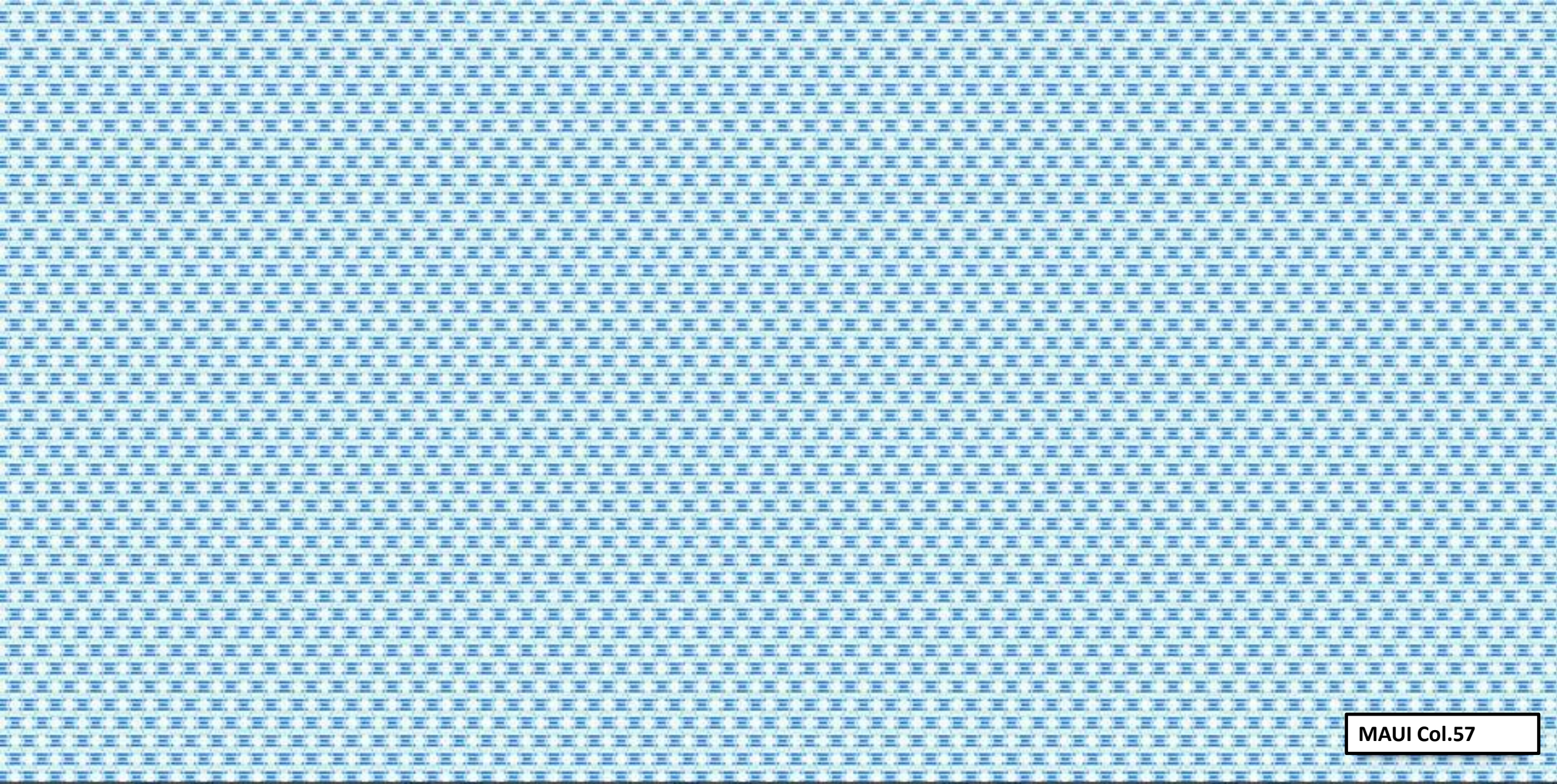
MAUI Col.37



MANOA Col.37



KULA Col.37



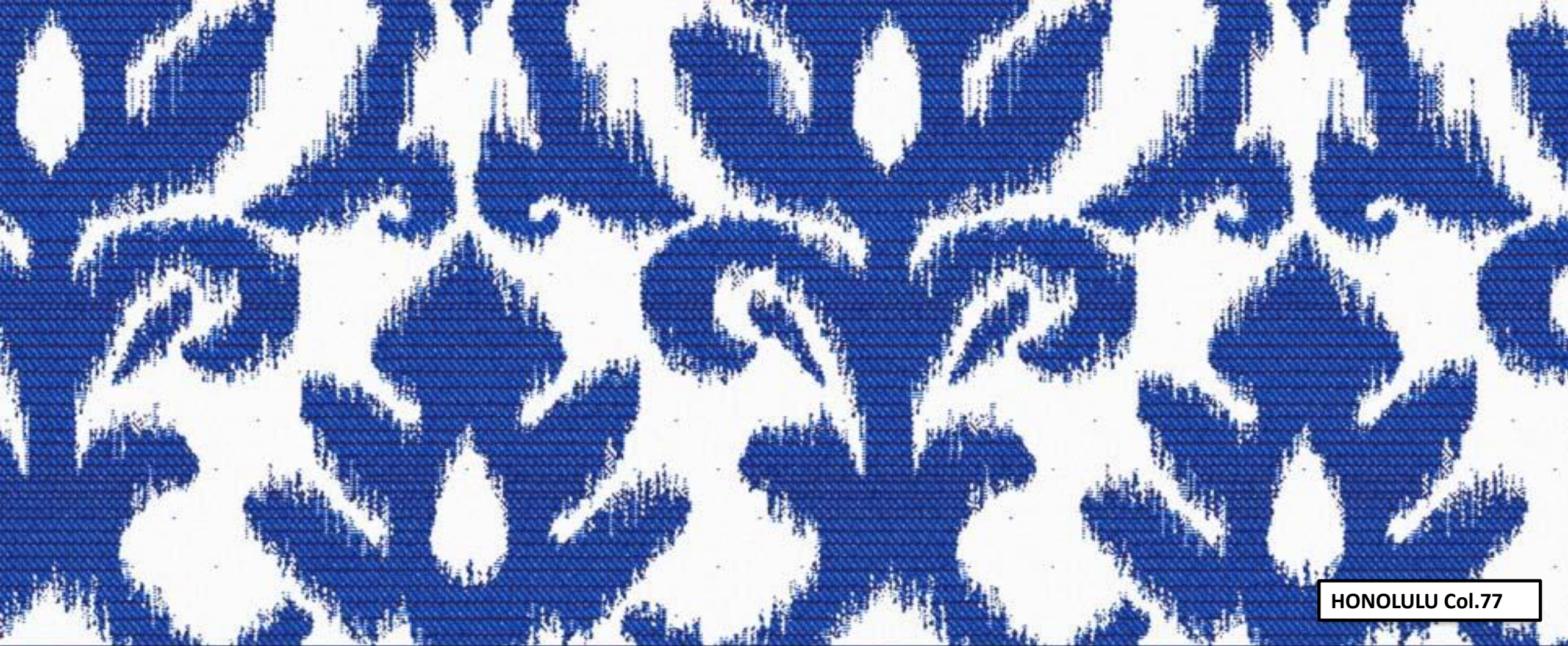
MAUI Col.57



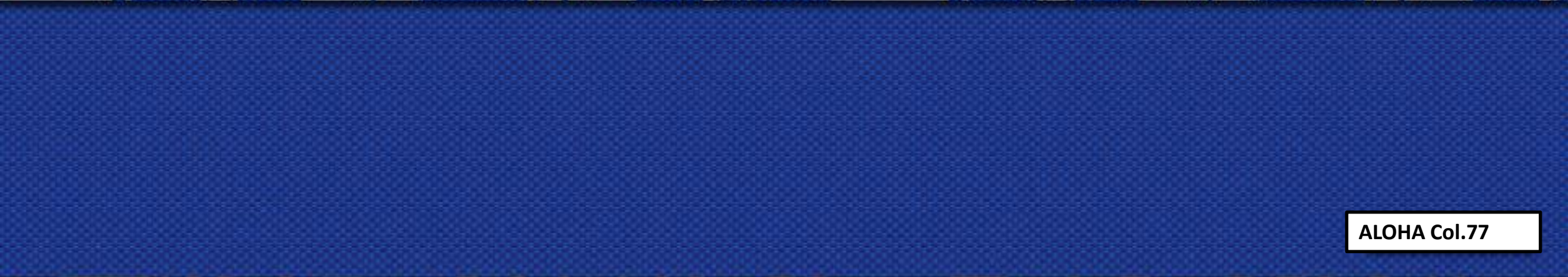
WAIKIKI Col.57



PUNA Col.57



HONOLULU Col.77



ALOHA Col.77



PAHALA Col.77



KULA Col.77



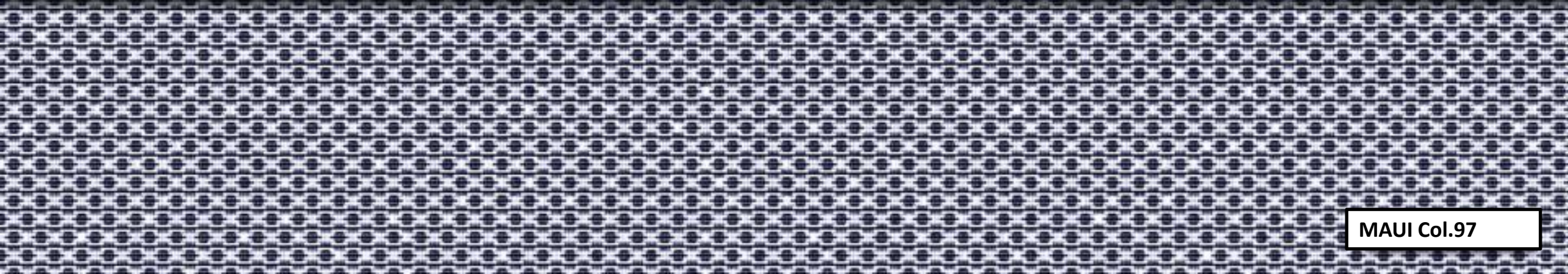
MANOA Col.97



ALOHA Col.97



PUNA Col.97



MAUI Col.97



PAHALA Col.39



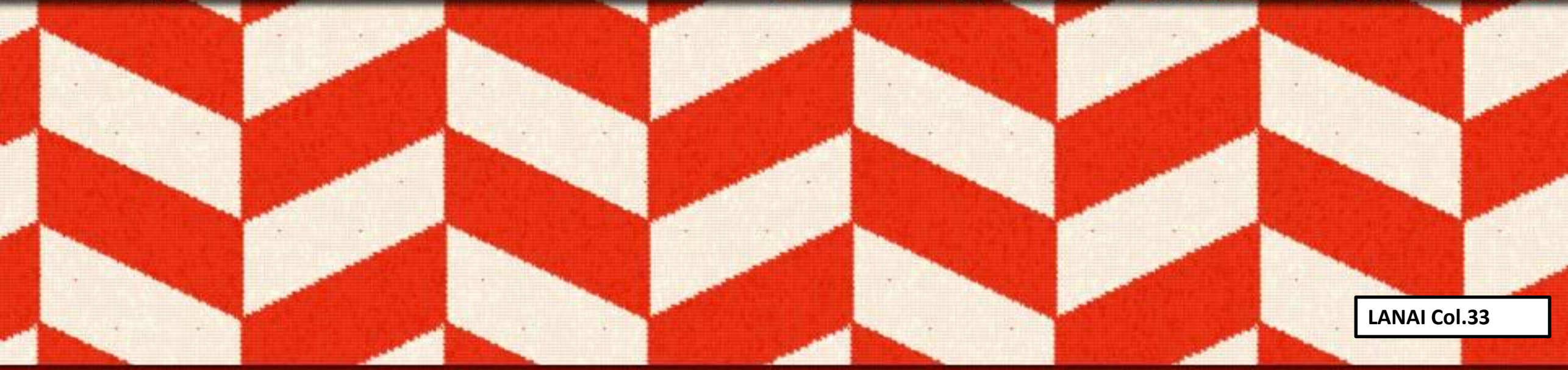
MANOA Col.39



KULA Col.39



PUNA Col.33



LANAI Col.33



ALOHA Col.33



WAIKIKI Col.83



MAUI Col.83



HONOLULU Col.83



PAHALA Col.55



LANAI Col.55



MAUI Col.55



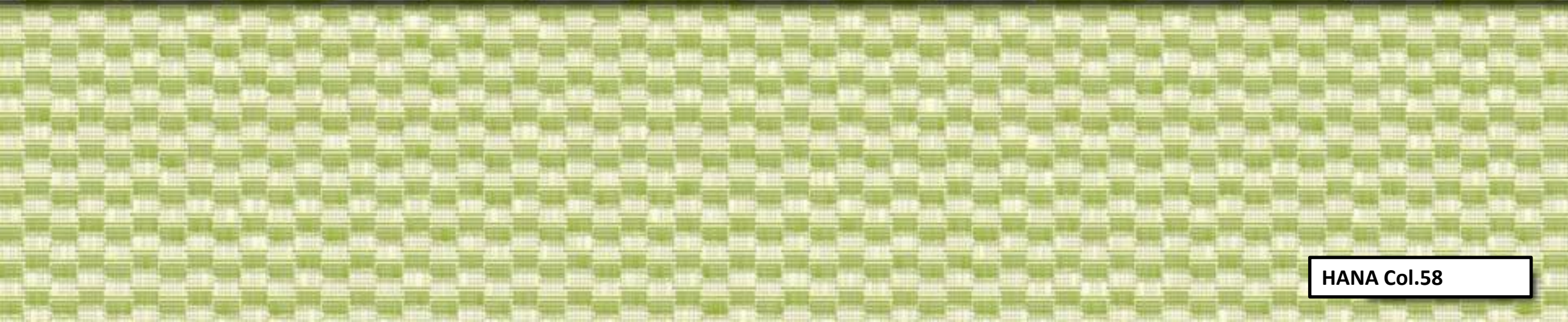
PAHALA Col.75



PUNA Col.58



LANAI Col.58



HANA Col.58



WAIKIKI Col.88



KULA Col.88



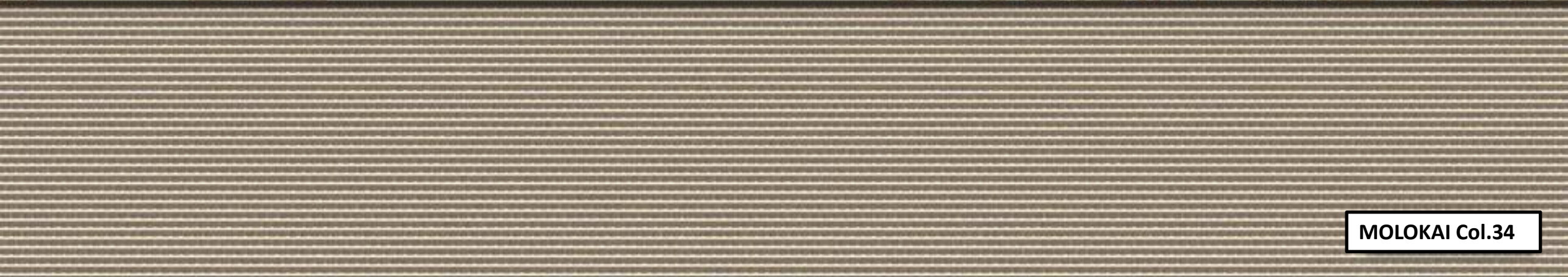
PUNA Col.88



MAUI Col.88



PUNA Col.34



MOLOKAI Col.34



HILO Col.34



WAIKIKI Col.34



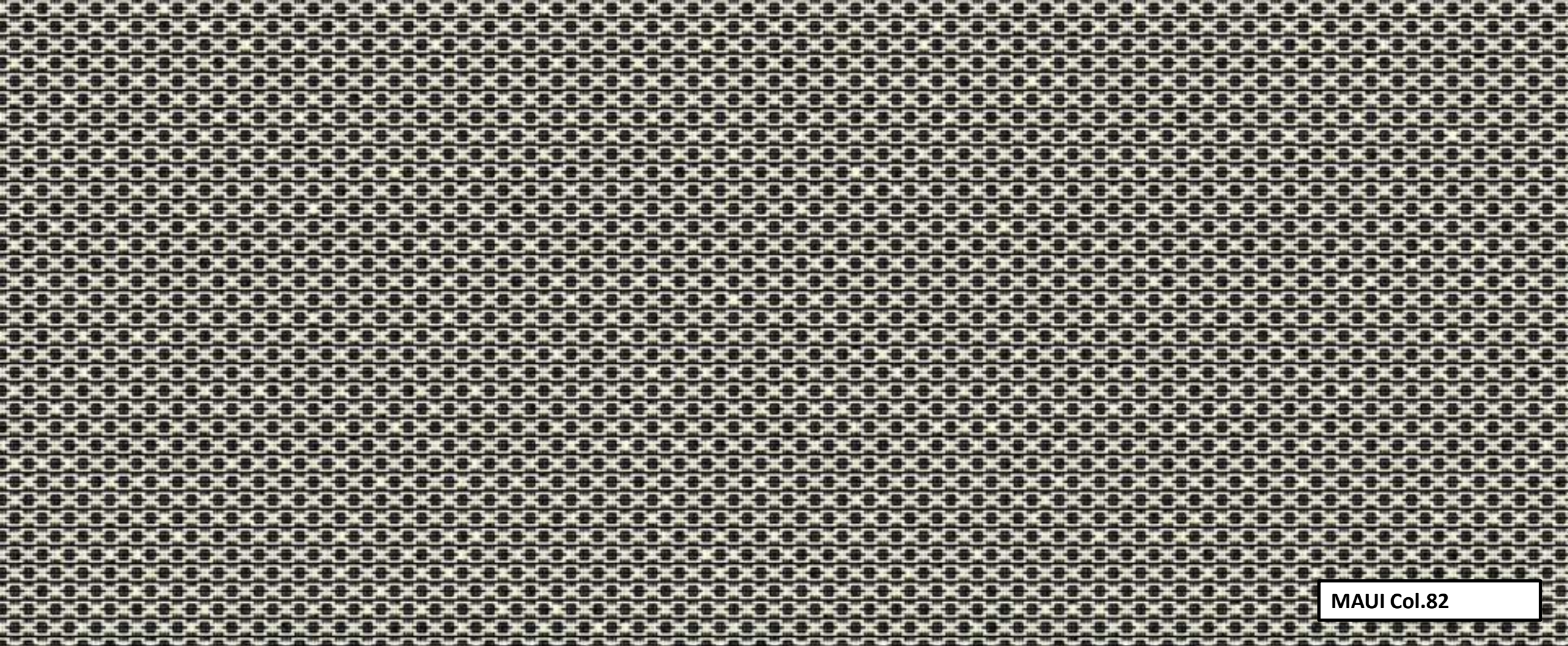
KULA Col.74



MANOA Col.74



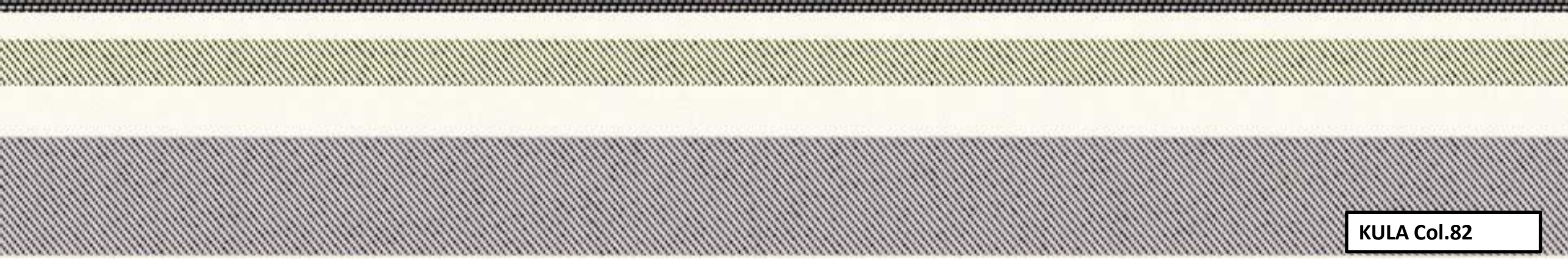
ALOHA Col.72



MAUI Col.82



LANAI Col.82





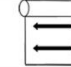









KULA Col.82



HONOLULU Col.82

HAWAII

	ALOHA	HANA	HILO	HONOLULU	KULA	LANAI	MANOA	MAUI	MOLOKAI	PAHALA	PUNA	WAIKIKI
Širina/Širina/Width/Breite/Altezza	320 cm	280 cm	280 cm	280 cm	280 cm	280 cm	280 cm	280 cm	280 cm	280 cm	280 cm	280 cm
Teža/Težina/Weight/Gewicht/Peso	258 gr/m2	267 gr/m2	300 gr/m2	300 gr/m2	300 gr/m2	300 gr/m2	300 gr/m2	267 gr/m2	267 gr/m2	300 gr/m2	300 gr/m2	300 gr/m2
Sestava/Sastav/Composition/ Zusammensetzung/Composizione	100% Akril-DRALON / 100% Akrilno vlakno-DRALON / 100 % Acryl-DRALON / 100% Akril-DRALON / 100% Acrilico-DRALON											
Obstojnost barve na drgnjenje-suho/mokro Postojanost boje na trljanje-suvo/mokro Colour fastness to rubbing-dry/wet Reibechtheit-trocken/nass Solidita del colore all'abrasione-secco/humido	UNE-EN ISO X12-2003 5 / 5											
Obstojnost barve na svetlobo / UV Postojanost boje na svjetlo / UV Colour fastness to light / UV Lichtechtheit / UV Solidita del colore alla luce / UV	UNE-EN ISO 105-B04 / UNE-EN ISO 105-B02 6 - 7 6 - 7											
Obstojnost barve pri pranju Postojanost boje kod pranja Colour fastness to washing Farbechtheit beim waschen Solidita del colore al lavaggio	UNE-EN ISO 105-X12 4 - 5											
Pilling UNE-EN ISO 12945-2	4	4	4 - 5	4 - 5	4 - 5	4 - 5	4 - 5	4	4	4 - 5	4 - 5	4 - 5
Martindale UNE-EN ISO 12947-2	20.000	20.000	23.000	23.000	23.000	23.000	23.000	20.000	20.000	23.000	23.000	23.000
Ponovitev/Ponavljjanje/Repeat/Rapport/Rapporto	0H / 0V	0H / 0V	18H / 34V	18H / 19V	0H / 30V	9H / 4V	36H / 24V	0H / 0V	0H / 0V	36H / 56V	36H / 36V	18H / 17V
Smer/Smjer/Direction/Richtung/Direzione												



Zaščita tkanine: VODOODBOJNI NANOS, ZAŠČITA PROTI PLESNI
 Zaštita tkanine: VODOODBOJNI NANOS, ZAŠTITA OD PLJESNI
 Fabric protection: WATER REPELLENT, MILDEW RESISTANT
 Stoffschutz: WASSER ABWEISEND, ANTI SCHIMMEL
 Protezione tessuto: IDROREPELENTE, ANTIMUFFA

Možna odstopanja v barvi med barvnimi partijami
 Moguća odstopanja u boji između proizvodnih lotova
 Colour shades may vary between dye-lots
 Farbabweichung ist möglich
 Tra i vari lotti possono verificarsi delle variazioni nel colore



STAIN RESISTANT FABRICS



ANTI-MILDEW